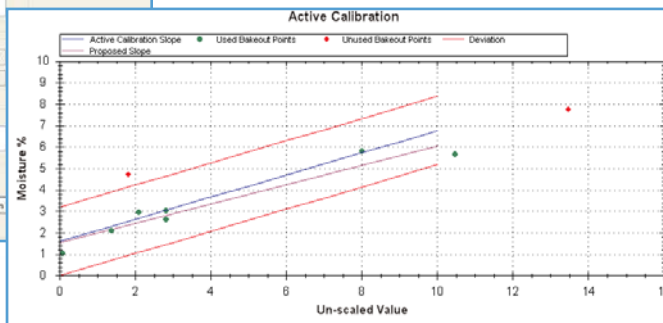
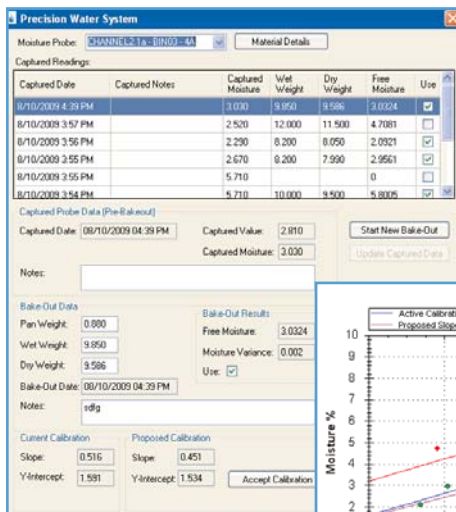
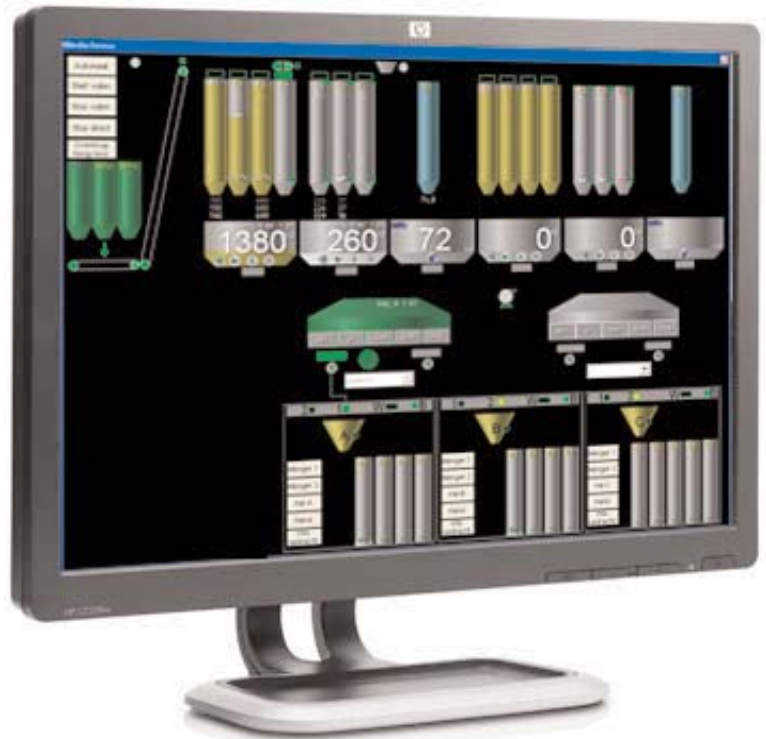


COMMANDbatch Concrete Products

The COMMANDbatch Concrete Products (CP) system works with your concrete mixing plants to provide a total, automated solution for the production of precast, prestressed, and other concrete products

The COMMANDbatch CP is a modern, Windows-based system that is fully compatible with standard concrete production equipment. Advanced process control features deliver accurate batching, as well as accelerated production. Clear and well-organized visuals enable system processes to be monitored and controlled with ease.

The control software *optimizes* the production process to deliver the highest possible production capacity while maintaining the required concrete quality. Included in the process controls and monitors are unique features like mixer power monitor and variable speed control, coarse and fine aggregate moisture controls, mixer moisture controls, and recycle water densities.



Precision Water System Integration

The Precision Water System (PWS) delivers moisture control for coarse and fine aggregates with a calibration curve, assuring the operator of the quality of the moistures. The system automatically captures a moisture sample with the click of a button. Calibration is simplified, and once calibration, the system operates independently with no operator intervention.

SCC Moisture Control  Dry Cast Moisture Control  Color Control System
Bin Fill Controls  Concrete Delivery Automation

www.commandalkon.com
1-800-624-1872
info@commandalkon.com

COMMANDbatch CP General Features

- ◆ Controls **SCC concrete** utilizing aggregate probes as well as viscosity probes
- ◆ **ZERO Slump** moisture control system integrated in the mixer
- ◆ Full integration with color dispensing equipment
- ◆ Material handling and logistics
- ◆ Delivers the concrete all the way to the form utilizing automated cranes and pouring buckets
- ◆ Wireless remote control of the batch process and delivery system at the factory floor
- ◆ Unlimited number of inputs for materials, formulas, and process sequences (batching and discharge sequence, prioritization, mixing and discharge times)
- ◆ Material process parameters stored with each material (coarse/fine grades, vibrator options)
- ◆ Easy sorting, grouping, field positioning and column width adjustment on-screen
- ◆ Simple remote controls via handheld PC
- ◆ Batch Time Exceeded Alert
- ◆ Process delay alerts (mixer not available, discharge not complete, mixer door not open)
- ◆ Process and component issue alerts (error window and log files)
- ◆ User-level security
- ◆ Multi-lingual system
- ◆ On-screen help
- ◆ Worldwide installation and support staff provides professional support 24/7/365

On-screen visualization/monitoring of:

- ◆ Normal process indicators, dependent on your system and add-ons
- ◆ Feed bin inventory levels
- ◆ Material flows and process control status (valves closed/open)
- ◆ Weight measurements (requested, actual, net, and gross)
- ◆ Scale and mixer process times
- ◆ Mixer power output, moisture level, pump, air pressure, and filter status readings
- ◆ Recycled water density monitoring
- ◆ Delivery vehicle present, halt, post-mix, ship additives, and departure signals



www.commandalkon.com

info@commandalkon.com

1-800-624-1872

1800 International Park Drive

Suite 400

Birmingham, AL 35243